



**Welcome to
research at KSU**



***KSU
RESEARCH
THAT
MATTERS***



March 2024

Office of
Research



STRATEGY

SUPPORT &
INFRASTRUCTURE

Office of
Research

RESEARCH

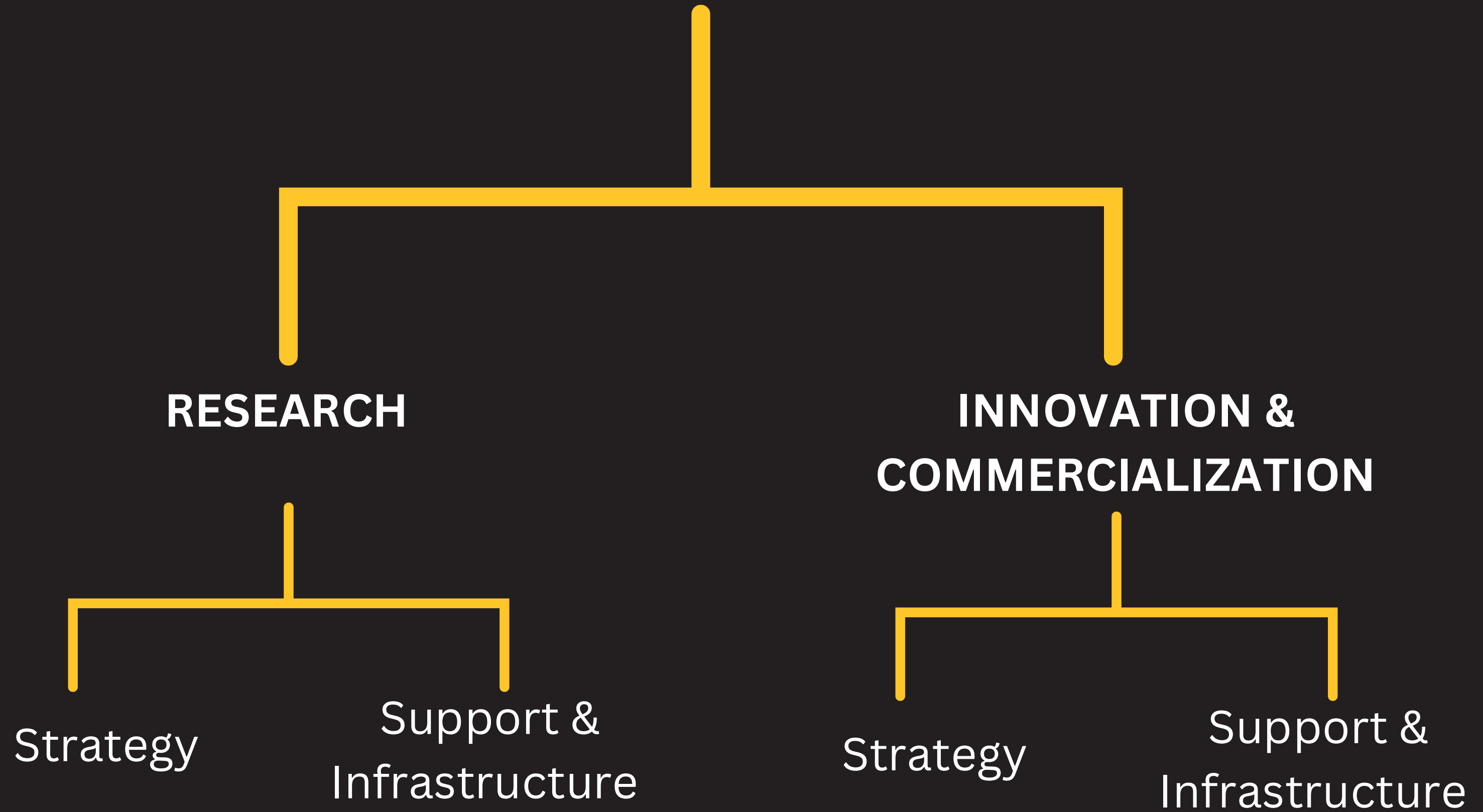
**INNOVATION &
COMMERCIALIZATION**

Strategy

Support &
Infrastructure

Strategy

Support &
Infrastructure



SUPPORT MECHANISMS

- Internal seed funding programs
- Equipment database
- Grantwriting resources including templates for proposals

UPCOMING INITIATIVES:

- Cayuse updates & new modules
- Research Concierge Program
- Odyssey: Researcher Activity Platform
- Applying AI in your research
- Dashboards

UNDERGRADUATE STUDENT RESEARCH

- First Year Scholar Program
- Second Year Scholar Program
- VIP program
- Summer Undergraduate Research Program
- Undergraduate Research Peer Mentor Program

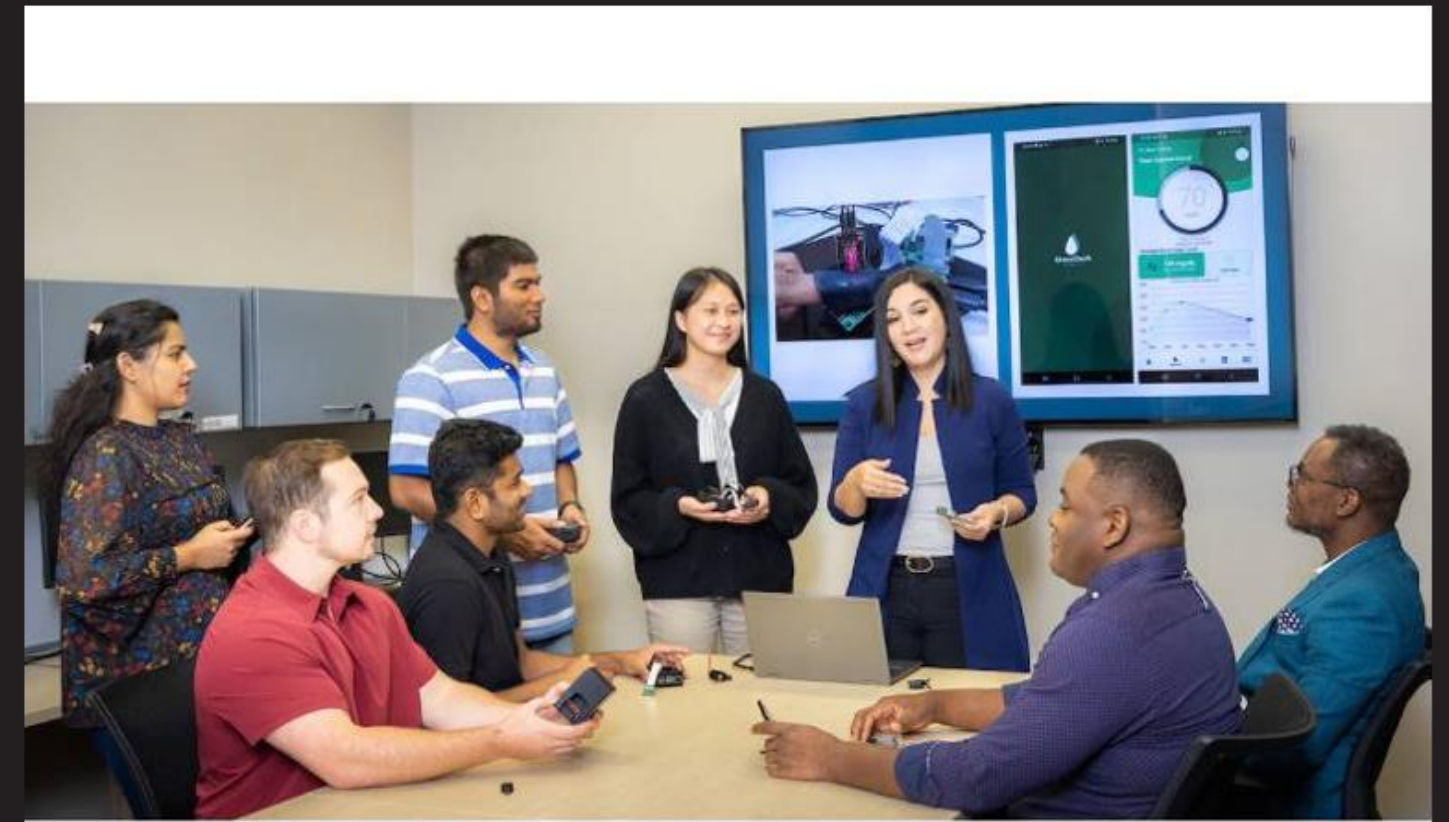


INNOVATION & COMMERCIALIZATION



INNOVATION PIPELINE

1. Technology Scouting at internal research presentations
2. Invention disclosure and prior art review
3. *Seed funding (\$5K) with provisional filing*
4. *Customer discovery training and activity (Innovation Launch Pad)*
5. *Support for GRA Venture Development funding*
6. *Support for company formation*
7. *Quick Start Licensing Program*
8. *HatchBridge residency, mentorship, and training*
9. *SBIR/STTR funding*
10. *Fund raising and exit from HatchBridge*



Ideate – Validate – Launch – Grow

STRATEGIC PLAN

1. Increase Research Productivity and Impact

- Increase extramural research funding
- Recruit and retain faculty to increase research capacity
- Develop interdisciplinary research centers

2. Accelerate Research Innovation and Impact

- Grow research commercialization, entrepreneurial initiatives, and ventures
- Cultivate external research alliances that enhance collaboration and innovation

3. Invest in Student Research Support

- Expand graduate and undergraduate research experiences and participation
- Elevate the quality of research mentorship for graduate and undergraduate students
- Increase sponsored GRA opportunities and support

NEW FACULTY RESOURCES



- Visit our website to learn more about our divisions, resources, etc. and to Sign up for our monthly newsletter
- Add the OVPR calendar to your Outlook to see upcoming events
- Explore RDSI Resources for Faculty in D2L
- Enroll in the PI Academy to help you launch your research agenda at KSU

National Center for Faculty Development and Diversity (NCFDD)

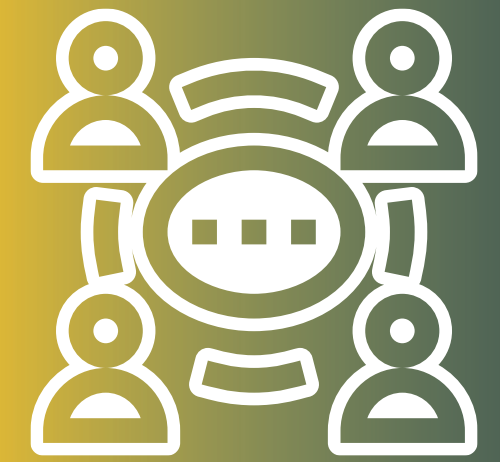


- NCFDD provides webinars, discussion forums, writing challenges, and more
- Resources that especially support your research agenda are **highlighted** →
- **Free membership** is provided by KSU's Organizational Effectiveness, Leadership Development, and Inclusive Excellence (OLI)

NCFDD Core Curriculum



RESEARCH COMMUNITIES



Benefits of participating

- Opportunities for collaboration, peer-to-peer mentoring, and internal peer review
- Early access to internal research and networking tools (e.g., TeamSparx, Odyssey)
- Priority for internal funding and proposal support through the Office of Research

FACULTY RESEARCH CHAMPIONS



APPLIED TECHNOLOGIES



• Sylvia Bhattacharya, SPCEET



• Jason Harron, BCOE



• Mahmut Karakaya, CCSE

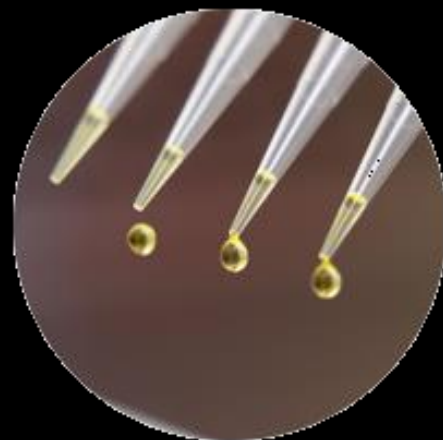
INNOVATIVE CREATIVITY



• Dr. Michael Carroll, CACM



• Dr. Victoria LaGrange, RCHSS



HEALTH & WELLNESS



• Dr. Weiwei Chen, CCOB



• Dr. Brian Kliszczewicz, WCHHS



• Dr. Maria Valero, CCSE

SUSTAINABLE COMMUNITIES



• Erin Adams, BCOE



• Mario Bretfeld, CSM



• Mine Hashas-Degertekin, CACM



PRESIDENTIAL INITIATIVE: CLUSTER HIRES

Rural Health &
Health Equity

Biomedical Center for
Cyber Physical
Hybrid Systems



Adaptive
Environmental
Solutions

Interactive
Media

Innovation & Commercialization

Community Engagement

Foundational Knowledge

Workforce Prep/
Education

A.I.

RESEARCH
that matters

ATRRC | APPLIED TECHNOLOGIES RESEARCH COMMUNITY

"Our vision is to create a vibrant, interdisciplinary research hub in every field of applied technology by uniting faculty, stakeholders, and partners to drive innovative and impactful research."

Artificial
Intelligence

Additive
Manufacturing
(3D Printing)

Biotechnology

Cybersecurity

Digital Divide

Robotics and
Automation

Internet of
Things (IoT)

Renewable
Energy
Technologies

Environmental
Technology

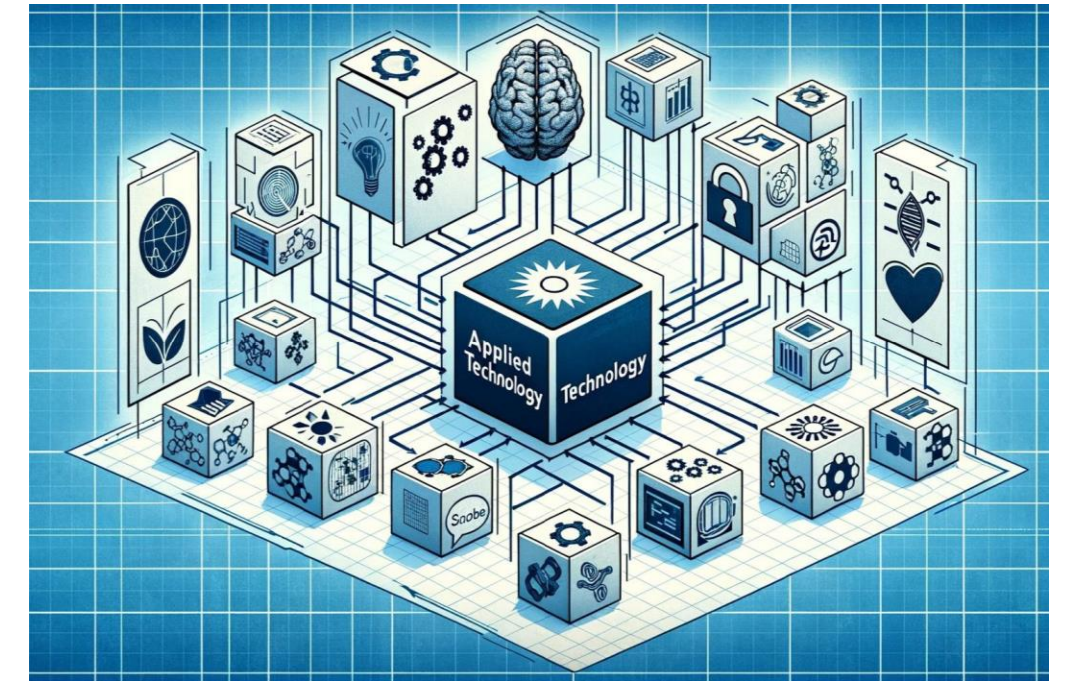
Virtual and
Augmented
Reality

Smart
Transportation
Systems

Human-
Computer
Interaction (HCI)

ATRC: Upcoming Events

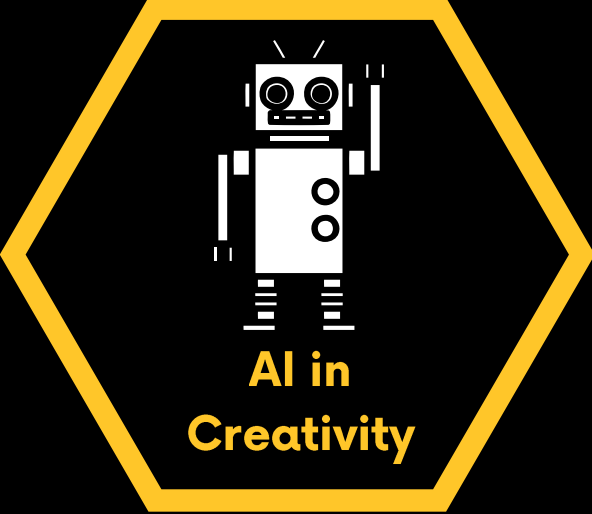
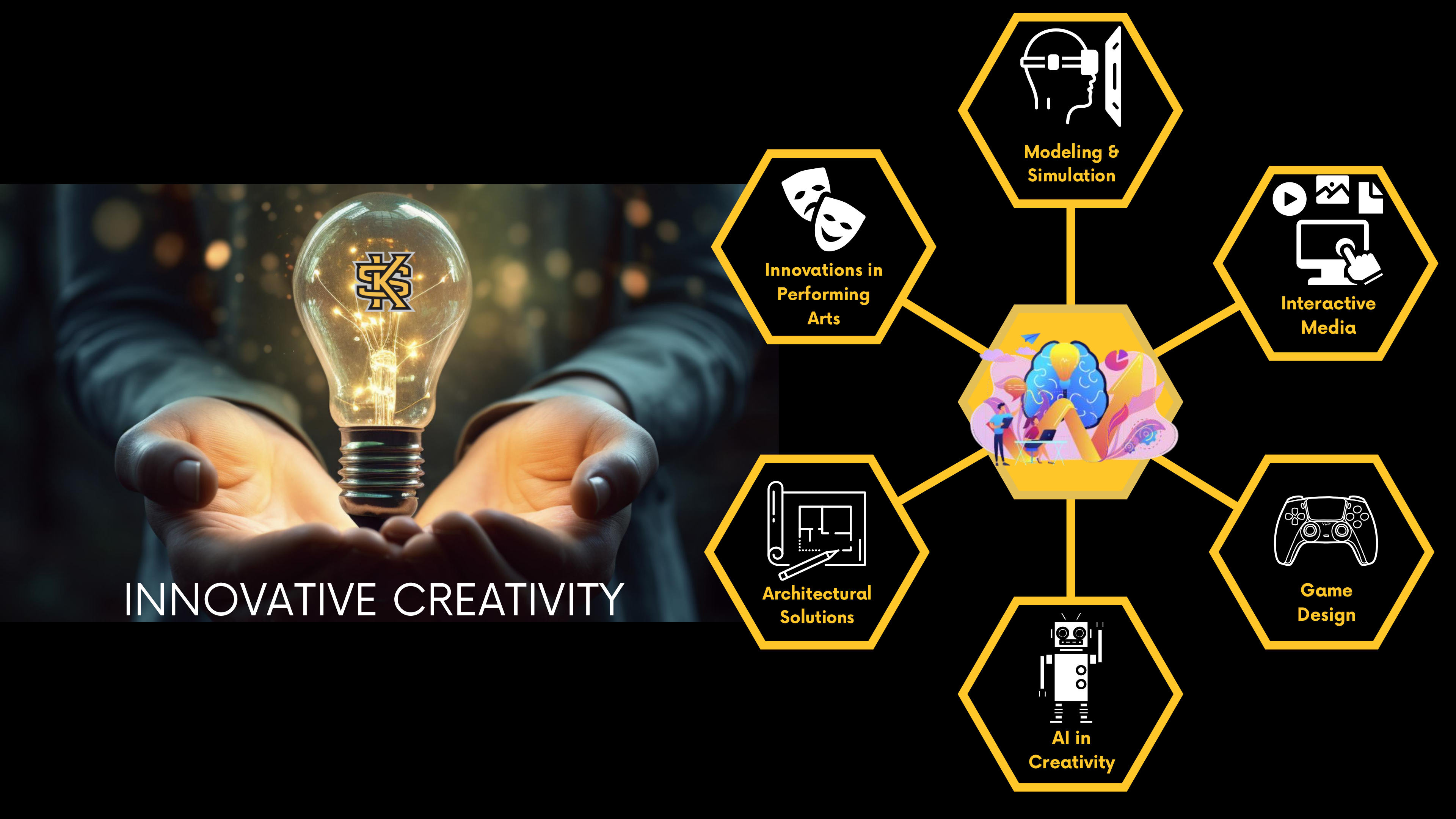
- August 20th – 11:00am-12:30pm – Launch 2024 Event
- September 18th – 1:00-2:30pm – Fall AI Symposium
- October – Social Event
- November – Think Tank



How can you be part of the Applied
Technology Research cluster?

<https://bit.ly/atksu>





INNOVATIVE CREATIVITY



Innovative Creativity Research Community

Fall Launch Networking Event

3:30-5:00 PM, Wednesday, August 21, 2024
KSU Center, KC300



GAMEPLAY SOCIALIZATION AND SYMBOLIC INTERACTION IN DIGITAL GAMES

Speaker series: Interactive Media

September 20,
11:30 - 1:00 P.M.



David Kirschner

Associate Professor of Sociology
Gwinnett College



Corporation Inc.

**Released on Steam,
August 30, 2024**
*First Game Distributed
by KSU Game Studio*



Mission Statement

Health & Wellness Research Community

Dr. Maria Valero (CCSE)

Dr. Weiwei Chen (CCOB)

Dr. Brian Klischczewicz (WCHHS)



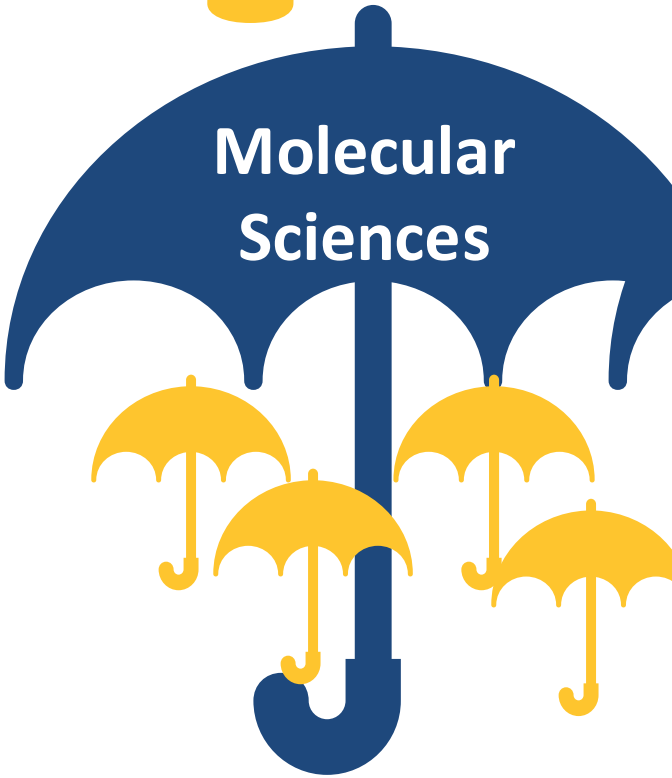
We are dedicated to advancing the **health and wellbeing of individuals and communities** through innovative research at the intersection of **interdisciplinary excellence** in basic and applied health. Our mission is to create healthier, sustainable future for the **benefit of society**.

Members Support

- Connection with healthcare partners
- IRB guidance.
- Study recruitment guidance.



Health and Wellness



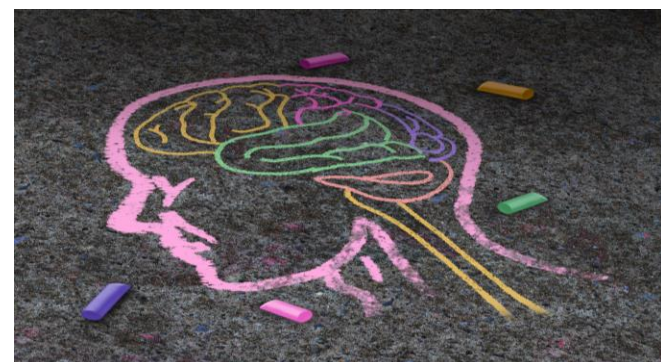


Past Events

Think Tank Session: Health Equity



Think Tank Session: Mental Health



Think Tank Session: Aging



Speaker Series: Rural Health and Health Disparities



Jennifer L. Barkin, PhD

FALL 2024 Events



23- H&W Launch & Pitch Event
Follow-up Think Tank Summer sessions



19 - Speaker series
26 - Speaker series



3 - Speaker Series
10 - Speaker Series
18 - Think Thank Session Fall



21 - H&W Social
Follow up Think Tank Fall Session

Sustainable Communities: **Mission**



Research in the sustainable communities thrust aims to investigate the complexities of **social, economic, and environmental interactions** at the interface between human and natural landscapes, striving to **develop technologies, models and policies** that foster community engagement, resource efficiency, and long-term ecological balance.

Sustainable Communities: **Vision**

*Center for
Adaptive Environmental Solutions*

Green Technologies

Living

Housing

Transportation

Biological Innovations

Food Production

Ecosystem

Services

Conservation

Human Wellbeing

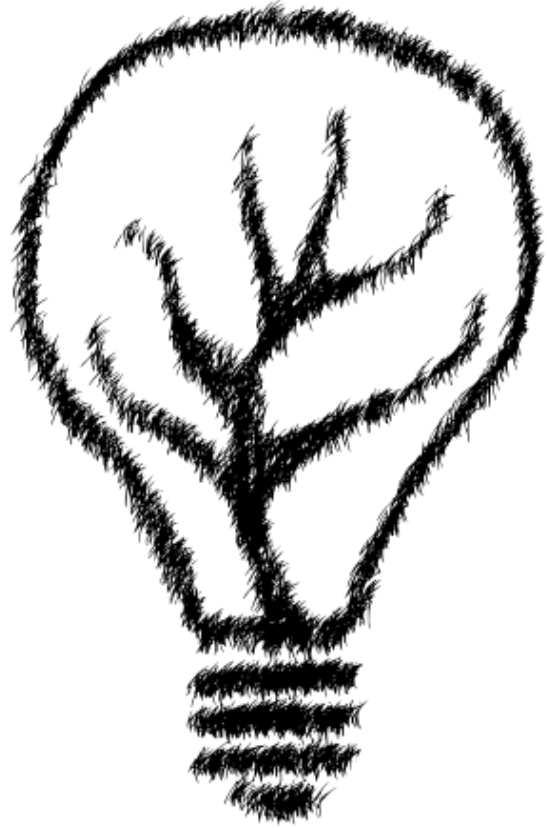
Education

Social Science

Workforce

Development

Sustainable Communities: Upcoming Events



Launch Event (CSM Atrium)

Monday, August 19th 2:00-3:30 pm

Fall Social (KSU Field Station)

late September



Sustainability Fair in collaboration
with the Office of Sustainability



**What questions do
you have?**

