

Student Success Resources at Kennesaw State University

Laura Howard

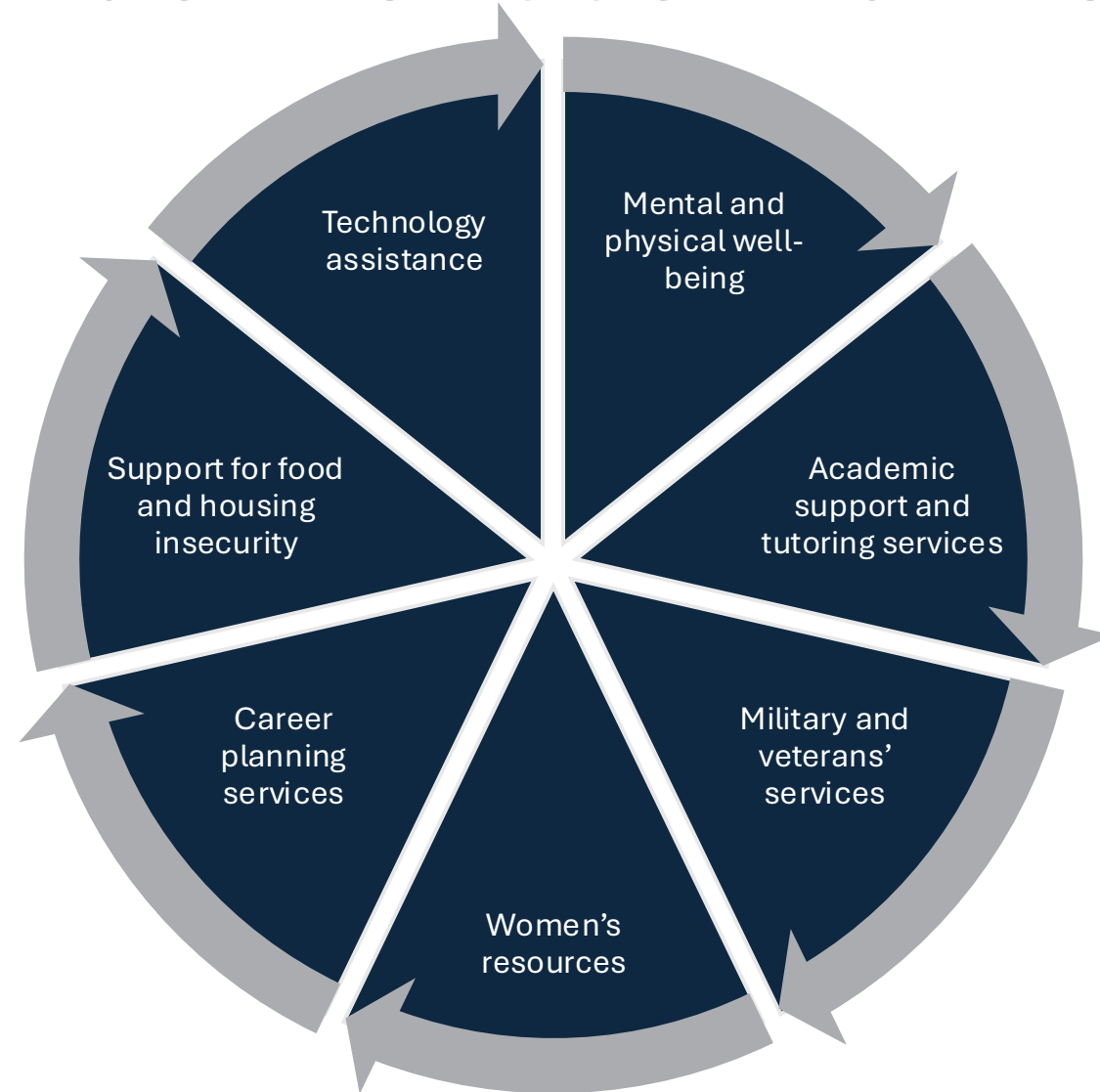
Sr. Teaching and Learning Consultant



KENNESAW STATE
UNIVERSITY
CENTER FOR EXCELLENCE IN
TEACHING AND LEARNING

Campus Resources Supporting Student Success

Student Success at KSU



Student Support and Wellness Resources

- Wellbeing@KSU
- [Department of Career Planning & Development](#)
- [Women's Resource Center](#)
- [Student Health Clinic](#)
- [Military and Veteran Services](#)

Academic Resources

- [Academic Tutoring Services](#)
- [Disability Resources](#)
- [Organizational Effectiveness, Leadership Development, and Inclusive Excellence](#)
- [Library](#)
- [Supplemental Instruction](#)
- [The Writing Center](#)
- [Virtual Smart Center](#)
- [Academic Advising](#)

Technology Resources

- [1:1 Training Session](#)
- [Computer Labs](#)
- [Browser Checker](#)
- [My KSU site](#) for accessing online tools
- [USG Desire2Learn Help Center](#)
- [D2L Training Options & Resources for Students](#)
- [Owltrain Online Courses](#)
- [Check Service Outages](#)

Technology Help

Students can request help with technology in the following ways:

- **Fill out a [service form](#)**
- **Email: studenthelpdesk@kennesaw.edu**
- **Call 470-578-3555**

Ways Faculty Can Support Student Success



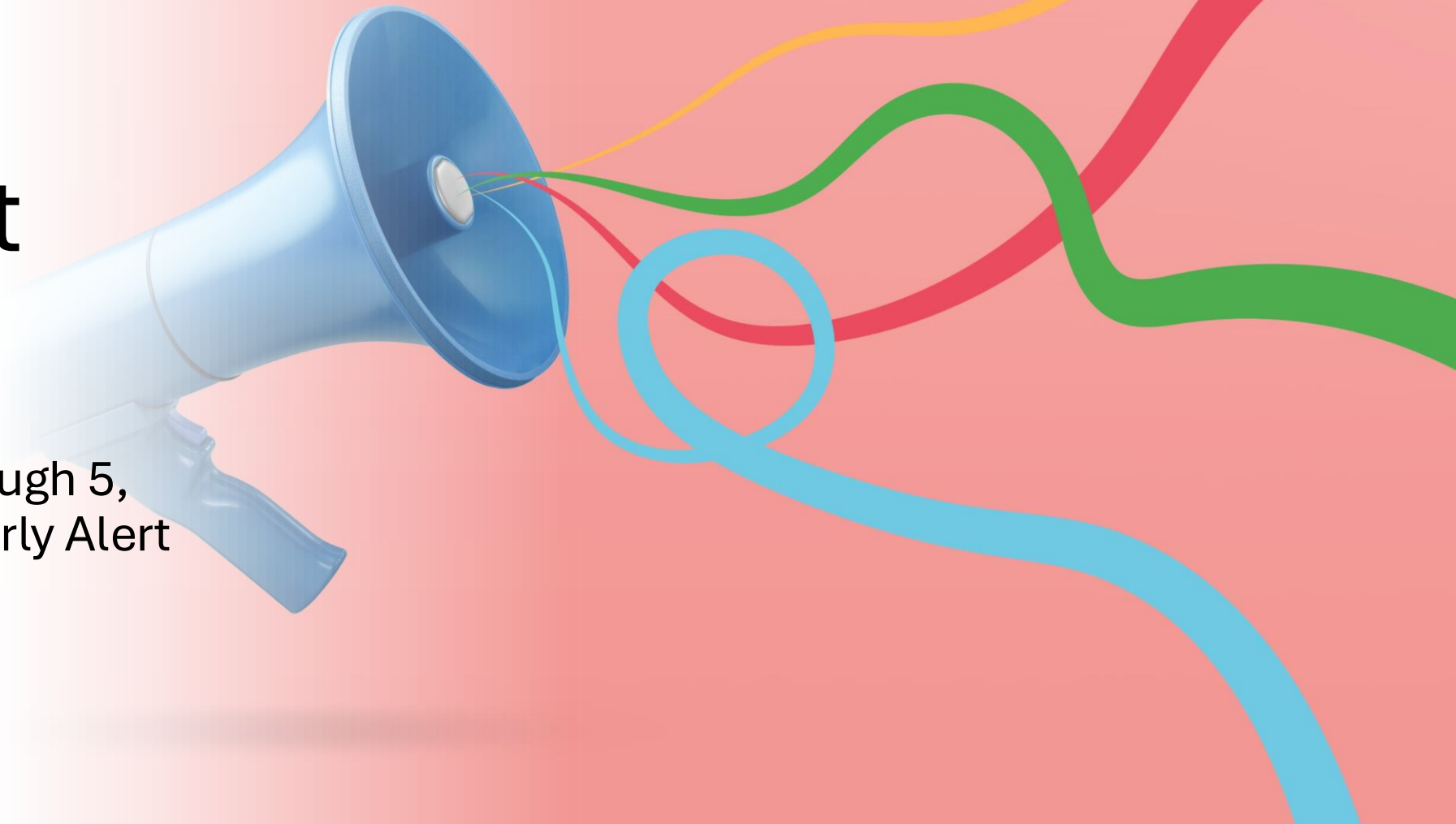
uHoo Analytics

Toward the beginning of the semester, use KSU's uHoo Learning Analytics to monitor students' progress so you can take evidence-based actions to support them.

For more information:
<https://cia.kennesaw.edu/uhoo/index.php>

Early Alert Reporting

During weeks 3 through 5, participate in the Early Alert initiative.





Midterm Grades

Use Midterm Grades at the midpoint of the semester. Ensure your grading scheme reflects substantive student work by midterm.

For more information:
<https://www.kennesaw.edu/registrar/faculty-resources/grading-policy-and-procedures.php>

BRT Red Flag Reporting

Use the Red Flag reporting tool provided by the Behavior Response Team to share concerns you may have about another person (students and non-students).

- This tool may also be used to satisfy legal reporting requirements, if relevant.

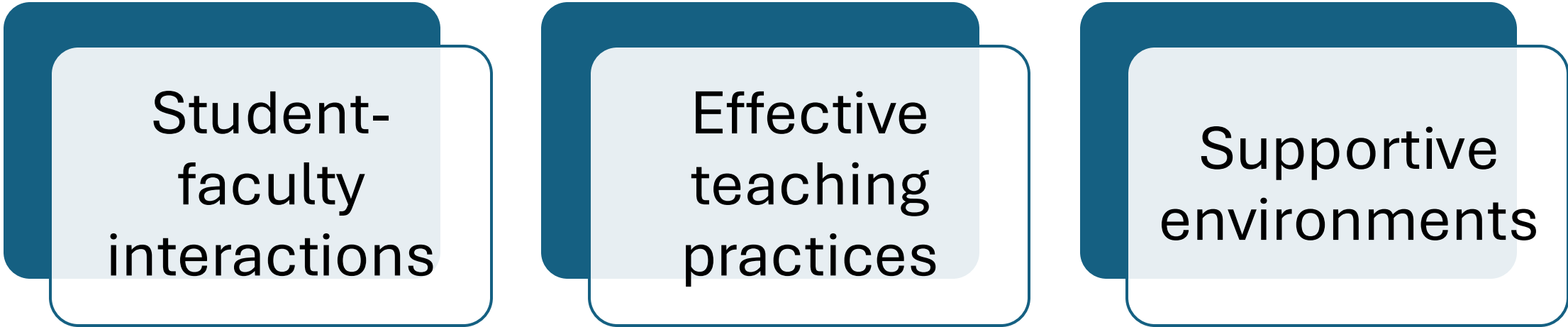


Expanding the NEST

- [Menu of 25 strategies](#)
- Evidence-based
- [Responsive to NESSE feedback data](#)
- “Small teaching”
- [Contact CETL to request help](#)



NEST Areas of Emphasis



Student-
faculty
interactions

Effective
teaching
practices

Supportive
environments

Summary

- Student success goes beyond academic success.
- KSU offers wellness support, academic resources, and technology resources.
- UHOO Analytics, Early Alert Reporting, Midterm Grades, and Behavior Response Team Red Flag reporting are important ways faculty can support students.
- The NEST (Nurturing Environments through Scholarly Teaching) Menu includes 25 evidence-based practices for student-faculty interactions, effective teaching practices, and supportive environments.
- CETL is here to help. Feel free to book a consultation, request an observation, or attend our workshops, which typically include a virtual option.

Which Ways Will You Support Student Success?

- uHoo analytics
- Early Alert reporting
- Midterm grades
- BRT Red Flag reporting
- Expanding the NEST practices in the areas of student-instructor interactions, effective teaching practices, or supportive environments

Please respond in the chat.



Questions? Comments?
Ideas to Share?
