



---

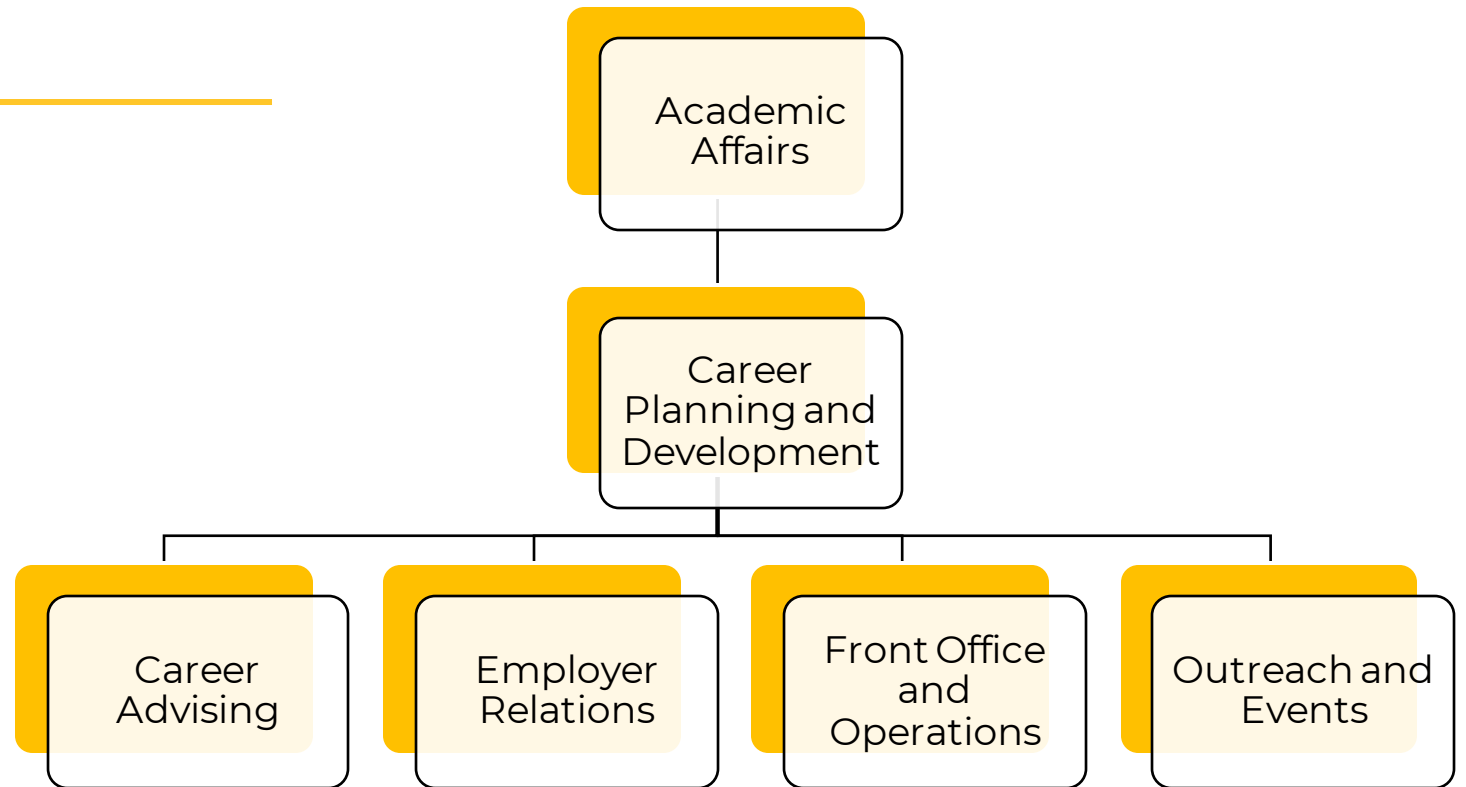
**KENNESAW STATE**  
UNIVERSITY

# **The Department of Career Planning and Development**

Services and Resources for  
Students and Faculty

# Introduction

- Philosophies
  - Embedded and Academically Integrated
  - Holistic
  - Collaborative with all Colleges and Campus Divisions
- Specific Functions with Students, Employers, and Campus Partners:
  - Explore
  - Prepare
  - Connect



## Mission Statement

Through individualized career advising, events that advance students' career connections, and by fostering an ever-growing employer network, we empower our unique community to develop confidence and design a fulfilling life.

# Explore

*Career exploration is a lifetime process.*

- Career Exploration Advisors are available to assist students who are:
  - Undeclared
  - Considering a change of major
  - Exploring or researching career options for their chosen major
- Students have access to multiple career assessments and exploration resources (including **YouScience** and **Steppingblocks**).
- Students can participate in job shadowing, Career Connection events (with employer partners), workshops, and career conversations.



# Prepare

---

*The importance of being career ready, as job hunting is a fluid process.*

- Career and Internship Advisors (CIAs) are assigned to each academic college and support students in:
  - Finding and applying for co-ops and internships
  - Preparing and improving their resumes and cover letters
- Assistant Directors of Career Advising provide support to students by:
  - Offering mock interviews and individualized interview coaching
  - Advising on graduate program options and application processes, in addition to job search and networking skills



# Connect

*Students can connect with employers from a variety of industries, both in person and virtually.*

- 20K+ position postings in Handshake, in addition to hundreds of employer-sponsored events.
- Virtual and in-person job and internship fairs offered each semester.
  - Accounting, Finance, FinTech (fall only)
  - Education (spring only)
  - General/All Majors (fall and spring)
  - Graduate Schools (fall only)
  - On-Campus Jobs (fall and spring)
  - STEM (fall and spring)
  - Virtual (fall, spring, and summer)
- Employers recruit at KSU by hosting info tables, info sessions, and on-campus interviews.



Our Employer Relations Team manages all recruiting inquiries.

Email [careerctr@kennesaw.edu](mailto:careerctr@kennesaw.edu).

# Faculty-Specific Services

- Classroom presentations and workshops
- Career outcomes data by college and major
- Connections to employer partners and contacts
- Handshake access to view postings and events
- Career exploration curriculum
- Facilitating employer site visits
- Internship/co-op participation data
- Job search resources and market trend information

Career data available at: <https://www.kennesaw.edu/careers/data/index.php>

(Select "Campus & Community" for full datasets)



Submit your  
request for a  
career  
presentation  
today!





# Contact Us

---



470.578.6555



[kennesaw.edu/careers](https://kennesaw.edu/careers)



[career\\_services@kennesaw.edu](mailto:career_services@kennesaw.edu)



[KSUCareers](#)